



Electrolux

Warewashing Medium Small Single Skin Glasswasher with Drain Pump, Detergent Dispenser and Rinse Pump

ITEM # _____
MODEL # _____
NAME # _____
SIS # _____
AIA # _____



Warewashing

Medium Small Single Skin Glasswasher with
Drain Pump, Detergent Dispenser and Rinse
Pump

402085 (EGWMSGRPTF)

Glasswasher (medium small),
single skin, with drain pump
and rinse pump, 1 cycle,
60b/h - New Zealand

Short Form Specification

Item No.

Unit shall be Glasswasher type hot water rinsing. Electrical characteristics to be 230V one phase operation with two wash cycles of 60/120 seconds. Rinse temperature and pressure guaranteed by built in pressure boiler. Washing performance is ensured by a powerful wash pump, revolving washing spray arm. Double skin counter-balance door. 304 stainless steel construction to include door, frame, wash tank, tank filter, wash arms and rinse arms. The unit shall include rinse booster pump, drain pump, detergent and rinse aid dispenser pump and is equipped with electric cable plus New Zealand plug.

Main Features

- Built-in pressure boiler sized to raise incoming water to guarantee a minimum rinsing temperature of 82 °C for sanitizing rinse. No external booster is required.
- Washing system endowed with rotating washing arms, high powered wash pump and large capacity wash tank for professional washing.
- Built in rinse booster pump guarantees constant rinse pressure.
- Maximum capacity of 60 racks per hour.
- 2 cycles: 60/120 seconds.
- Simple operation control panel.
- Solid double skinned counter-balance stainless steel door with hurt-free handle in plastic.
- Equipped with tank filter to keep the soil particle above the water level ensure clean water for better washing performance.
- Provided with a multi-rack support allowing the use of 3 types of racks: 17"x14" (435x365 mm) racks or 17"x17" (435x435mm) racks or 450x450mm racks.
- Equipped with back flow prevention device to avoid dirty water flowing back to main water supply in case of failure.

Construction

- Robust structure thanks to stainless steel construction.
- Equipped with drain pump for easy and quick installation without opening the machine.
- Detergent dispenser for easy connection to the external detergent source.
- Unit to feature rinse aid dispenser pump.
- Requires only 1 phase 230V supply.

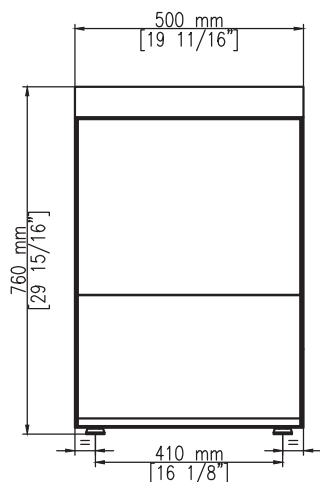
APPROVAL: _____



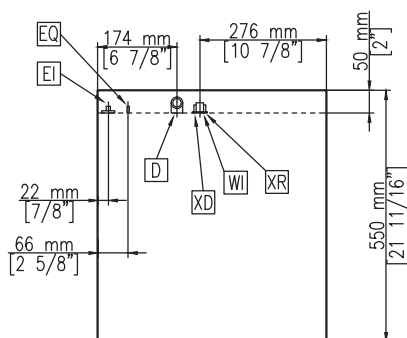
Electrolux

Warewashing
Medium Small Single Skin Glasswasher with Drain Pump, Detergent
Dispenser and Rinse Pump

Front

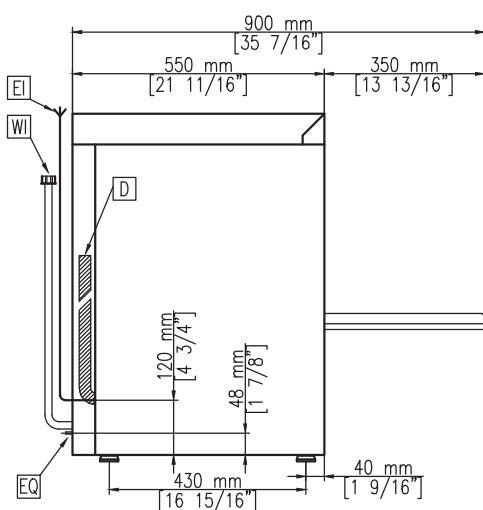


Top



- AV = Air vents WI = Water inlet
 CWI = Cold Water inlet XD = Detergent connection
 D = Drain XR = Rinse aid connection
 EI = Electrical connection
 EO = Electrical Outlet
 EQ = Equipotential screw

Side



Electric

Supply voltage:	402085 (EGWMSGRTF)	230 V/1 ph/50 Hz
Total Watts:		3.1 kW
Boiler heating elements:		3 kW
Tank heating elements:		2 kW
Wash pump size:		0.65 kW

Water:

Pressure, bar min/max:	2-5 bar
Water supply temperature:	10-65 °C
Working cycles time (sec.):	60/120
Boiler Capacity (lt):	5
Incoming water line size:	3/4"
Washing cycle temperature:	60 °C
Washing tank capacity (lt):	22
Hot rinse cycle temperature:	82 °C
Hot rinse cycle water consumption (lt):	2.5

Key Information:

External dimensions, Height:	760 mm
External dimensions, Width:	500 mm
External dimensions, Depth:	550 mm
Net weight:	54 kg
Shipping weight:	56 kg
Shipping height:	915 mm
Shipping width:	670 mm
Shipping depth:	620 mm
Shipping volume:	0.38 m ³
Noise level:	61 dBA
N° of working cycles - sec.:	2 (60/120)
Basket capacity:	60/h